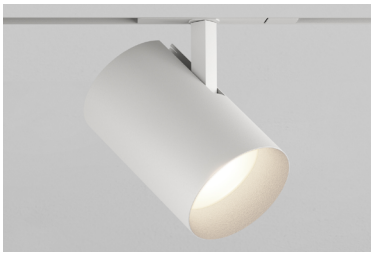


TRACK HEAD STANDARD STEM CT2 ADJUSTABLE

Highlight art, objects, places, spaces, seating areas, and architectural details with a classic profile that offers easy-to-adjust, in-field versatility.



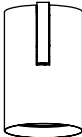


PROJECT NAME:

TYPE:



ORDERING INFORMATION - TRACK HEAD

JA8-2022 COMPLIANCE INDICATED BY SHADING

| CYLINDER | FIXTURE | RATING | BODY FINISH | BAFFLE FINISH | ADAPTER FINISH | CRI / WATTAGE PACKAGE | OCT | OPTIC (UGR) | DRIVER | MEDIA | |
|-----------|--|------------|---|---|---|--|--|--|------------------------------------|---|--|
| CT2 | | 1 | | | | | | | CE3 | | |
| CT2 3.25" | AD Adjustable 90° Tilt WM Locking Track Adaptor, Adjustable 90° Tilt* *(Required for Wall Mount) | 1 Dry/Damp | POWDERCOAT | POWDERCOAT | WH White BK Black |  STATIC WHITE 80S11A 80+ CRI, 11 Watts Lumens Delivered - 1216 80S17A 80+ CRI, 17 Watts Lumens Delivered - 1843 90S11A 90+ CRI, 11 Watts Lumens Delivered - 1045 90S17A 90+ CRI, 17 Watts Lumens Delivered - 1583 97S11A 97+ CRI, 11 Watts Lumens Delivered - 918 97S17A 97+ CRI, 17 Watts Lumens Delivered - 1390 | 24 2400K* *(90+ CRI only) 27 2700K 30 3000K 35 3500K 40 4000K | 10 10° (>19) 15 15° (<13) 20 20° (<10) 25 25° (<10) 40 40° (<10) 60 60° (<16) | CE3 Electronic 2% ELV / TRIAC 120V | STANDARD MEDIA 4 Soft Focus Lens* *(Required for 10° optic) ALTERNATE MEDIA 2 Honeycomb Louver* *(Not available for Warm Dim) 3 Clear Glass Lens* *(Not available for Warm Dim) 5 Frosted Glass Lens 6 Frosted Soft Focus Lens 7 Frosted Linear Spread Lens S Soft Focus Lens w/ Honeycomb Louver F Frosted Glass Lens w/ Honeycomb Louver N No Lens* *(Not available for Warm Dim) | |
| | | | WH White BK Black AB Architectural Bronze AG Satin Silver AU Cashmere Gold BB Burnt Bronze | WH White BK Black AB Architectural Bronze AG Satin Silver AU Cashmere Gold BB Burnt Bronze |  WARM DIM 90W18A 90+ CRI, 18 Watts Incandescent Profile Lumens Delivered - 1140 Halogen Profile Lumens Delivered - 1128 SEE PAGE 2 FOR WARM DIM PROFILE COMPARISON. | | | | | | |
| | | | ALUMINA | ALUMINA | | | | | | | |
| | | | 01 Brushed Obsidian | CONSULT FACTORY FOR ALUMINA FINISHES | | | | | | | |
| | | | 02 Matte Obsidian | | | | | | | | |
| | | | 03 Brushed Dark Patinated Bronze | | | | | | | | |
| | | | 04 Matte Dark Patinated Bronze | | | | | | | | |
| | | | 05 Brushed Aged Aluminum | | | | | | | | |
| | | | 06 Matte Aged Aluminum | | | | | | | | |
| | | | 07 Brushed Cast Brass | | | | | | | | |
| | | | 08 Matte Cast Brass | | | | | | | | |
| | | | 09 Brushed Light Patinated Bronze | | | | | | | | |
| | | | 10 Matte Light Patinated Bronze | | | | | | | | |
| | | |  |  |  | ALL DELIVERED LUMEN OUTPUTS AND T24 COMPLIANCE REFLECT 3000K PAIRED WITH 20° OPTIC AND SOFT FOCUS LENS. | | SEE PAGE 2 FOR UGR RATINGS | | | |

ALUMINA FINISHES BY LUCIFER LIGHTING™

[01] Brushed Obsidian

[03] Brushed Dark Patinated Bronze

[05] Brushed Aged Aluminum

[07] Brushed Cast Brass

[09] Brushed Light Patinated Bronze

[02] Matte Obsidian

[04] Matte Dark Patinated Bronze

[06] Matte Aged Aluminum

[08] Matte Cast Brass

[10] Matte Light Patinated Bronze

POWDERCOAT FINISHES

[WH] White

[BK] Black

[AB] Architectural Bronze

[AG] Satin Silver

[AU] Cashmere Gold

[BB] Burnt Bronze

TRACK HEAD STANDARD STEM CT2 ADJUSTABLE

ACCESSORIES

ALTERNATE MEDIA

- ☐ HCL-CT2 Honeycomb Louver*
- *(Not available for Warm Dim)

- ☐ CGL-CT2 Clear Glass Lens*
- *(Not available for Warm Dim)
- ☐ SFL-CT2 Soft Focus Lens
- ☐ FGL-CT2 Frosted Glass Lens
- ☐ FSFL-CT2 Frosted Soft Focus Lens
- ☐ FLSL-CT2 Frosted Linear Spread Lens

REPLACEMENT OPTICS

Interchangeable optics accessible by removing baffle.

- Static White

 - ☐ RO-70-15-S 15° optic
 - ☐ RO-70-20-S 20° optic
 - ☐ RO-70-25-S 25° optic
 - ☐ RO-70-40-S 40° optic
 - ☐ RO-70-60-S 60° optic
- Warm Dim

 - ☐ RO-70-20-W 20° optic
 - ☐ RO-70-25-W 25° optic
 - ☐ RO-70-40-W 40° optic
 - ☐ RO-70-60-W 60° optic

STATIC WHITE PERFORMANCE - 3000K



JA8-2022 INDICATED BY SHADING

| LUMEN PACKAGE | WATTAGE | 10° OPTIC | | 15° OPTIC | | 20° OPTIC | | 25° OPTIC | | 40° OPTIC | | 60° OPTIC | |
|--------------------------|---------|-----------------|-----|-----------------|-----|-----------------|-----|-----------------|-----|-----------------|-----|-----------------|-----|
| | | SOFT FOCUS LENS | | SOFT FOCUS LENS | | SOFT FOCUS LENS | | SOFT FOCUS LENS | | SOFT FOCUS LENS | | SOFT FOCUS LENS | |
| | | DELIVERED | LPW | DELIVERED | LPW | DELIVERED | LPW | DELIVERED | LPW | DELIVERED | LPW | DELIVERED | LPW |
| 80S11A | 11 | 613 | 55 | 1143 | 104 | 1216 | 111 | 1202 | 109 | 1124 | 102 | 949 | 86 |
| 80S17A | 17 | 828 | 49 | 1750 | 103 | 1843 | 108 | 1823 | 107 | 1690 | 99 | 1440 | 85 |
| 90S11A | 11 | 528 | 48 | 982 | 89 | 1045 | 95 | 1033 | 94 | 966 | 88 | 815 | 74 |
| 90S17A | 17 | 714 | 42 | 1503 | 88 | 1583 | 91 | 1566 | 92 | 1452 | 85 | 1237 | 73 |
| 97S11A | 11 | 456 | 41 | 862 | 78 | 918 | 83 | 907 | 82 | 848 | 77 | 716 | 65 |
| 97S17A | 17 | 616 | 36 | 1320 | 78 | 1390 | 82 | 1375 | 81 | 1275 | 75 | 1086 | 64 |
| 90W18AL (2700K-1800K) | 18 | - | - | - | - | 1140 | 63 | 1128 | 63 | 1044 | 58 | 915 | 51 |
| 90W18AD (3000K-1800K) | 18 | - | - | - | - | 1128 | 63 | 1126 | 63 | 1063 | 59 | 926 | 51 |

UNIFIED GLARE RATING

| 10° OPTIC SOFT FOCUS LENS | 15° OPTIC SOFT FOCUS LENS | 20° OPTIC SOFT FOCUS LENS | 25° OPTIC SOFT FOCUS LENS | 40° OPTIC SOFT FOCUS LENS | 60° OPTIC SOFT FOCUS LENS |
|------------------------------|------------------------------|------------------------------|------------------------------|------------------------------|------------------------------|
| >19 | <13 | <10 | <10 | <10 | <16 |

MEDIA LIGHT LOSS MULTIPLIER

| MEDIA | LIGHT LOSS FACTOR |
|------------|-------------------|
| No Lens | 1.05 |
| CGL | 0.97 |
| SFL | 1.00 |
| FGL | 0.85 |
| FSFL | 0.82 |
| FLSL | 0.78 |
| WDL | 0.00 |
| HCL | 0.75 |
| SFL W/ HCL | 0.68 |
| FGL W/ HCL | 0.47 |

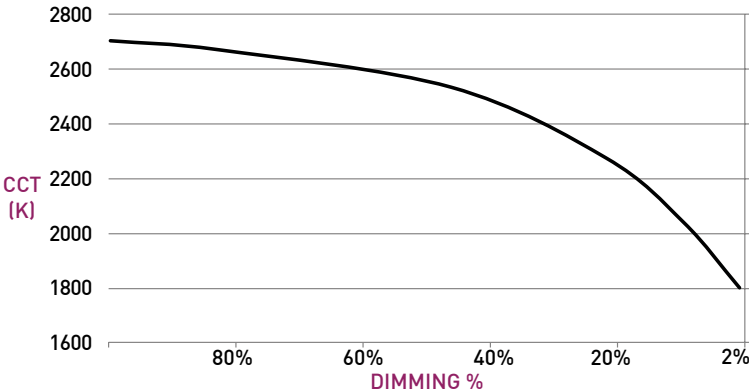
OUTPUT MULTIPLIER

| CCT | CCT SCALE |
|-------|-----------|
| 2400K | 0.85 |
| 2700K | 0.97 |
| 3000K | 1.000 |
| 3500K | 1.03 |
| 4000K | 1.08 |

WARM DIM PERFORMANCE - SOFT FOCUS LENS - 20° OPTIC

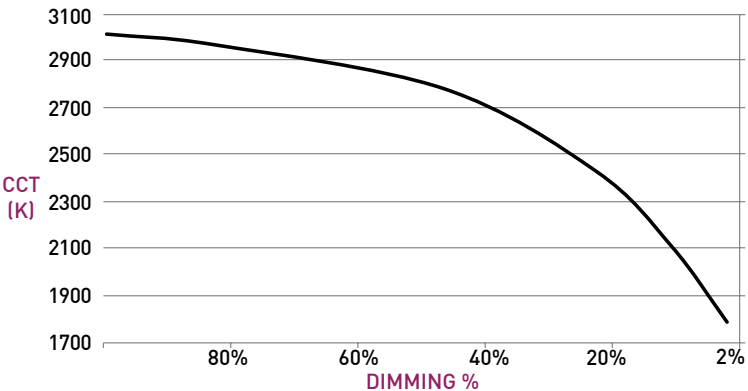
INCANDESCENT DIMMING PROFILE

| 90W18AL 2700K - 1800K | Full on 100% | Dimmed to 80% | Dimmed to 70% | Dimmed to 50% | Dimmed to 20% | Dimmed to 10% | Dimmed to 2% |
|--------------------------|-----------------|------------------|------------------|------------------|------------------|------------------|-----------------|
| CCT (K) | 2700 | 2650 | 2620 | 2520 | 2180 | 1950 | 1800 |
| Light Output (Lm) | 1128 | 902 | 790 | 564 | 226 | 113 | 23 |
| Power (W) | 18 | 14.4 | 12.6 | 9 | 3.6 | 1.8 | 0.36 |
| Efficacy (LPW) | 63 | 63 | 63 | 63 | 63 | 63 | 63 |



HALOGEN WARM DIM PROFILE

| 90W18AD 3000K - 1800K | Full on 100% | Dimmed to 80% | Dimmed to 70% | Dimmed to 50% | Dimmed to 20% | Dimmed to 10% | Dimmed to 2% |
|--------------------------|-----------------|------------------|------------------|------------------|------------------|------------------|-----------------|
| CCT (K) | 3000 | 2950 | 2920 | 2775 | 2375 | 2000 | 1800 |
| Light Output (Lm) | 1140 | 912 | 798 | 570 | 228 | 114 | 23 |
| Power (W) | 18 | 14.4 | 12.6 | 9 | 3.6 | 1.8 | 0.36 |
| Efficacy (LPW) | 62 | 62 | 62 | 62 | 62 | 62 | 62 |

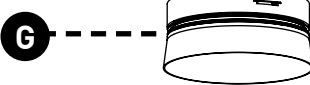
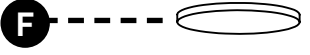
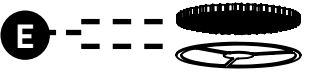
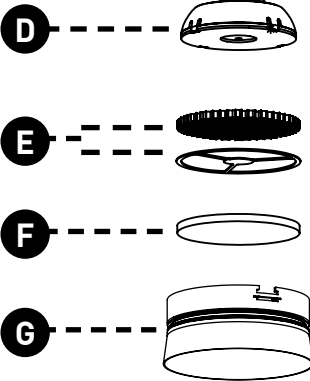
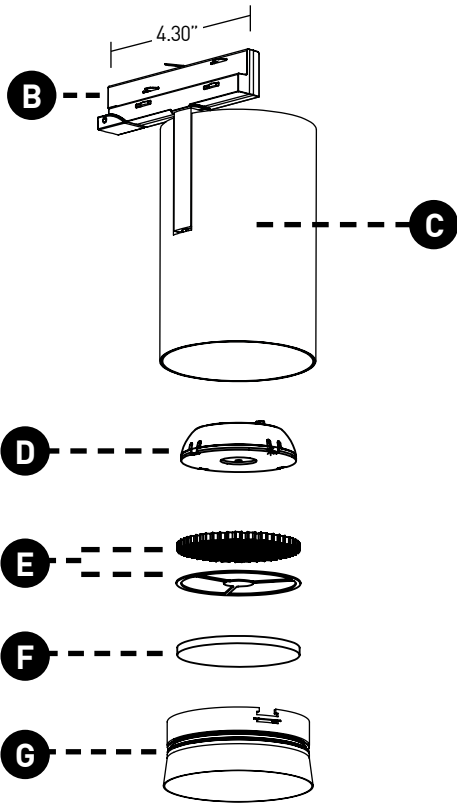
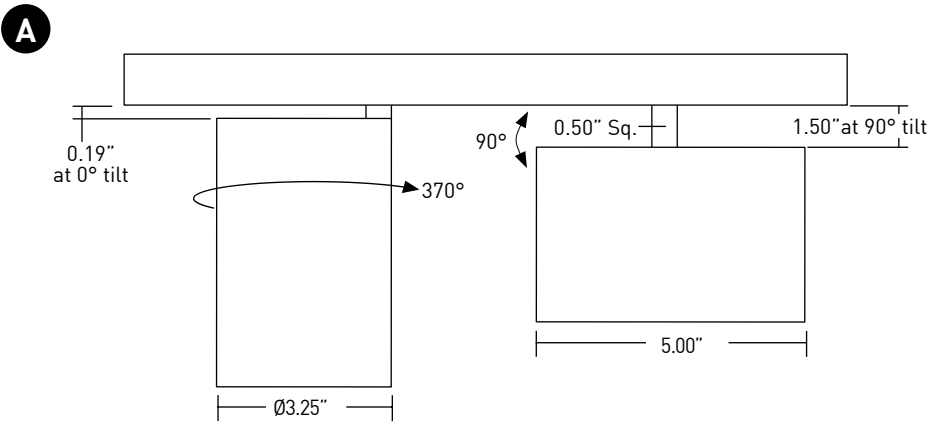


TRACK HEAD STANDARD STEM CT2 ADJUSTABLE

TRACK HEAD

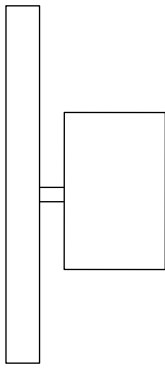
- A ADJUSTABILITY**
Up to 90° tilt and 370° lockable rotation.
- B TRACK ADAPTER**
Proprietary asymmetric track adapter; compatible with Lucifer Lighting track only. Available in Black and White finishes to match track systems.
- C BODY**
Power supply integrated into fixture body. Features integral stem. Available in powdercoat and Alumina finishes.
- D OPTICS**
Robust light engine with optimized optic pairing integrates Reflection, Refraction, and TIR offering 10°, 15°, 20°, 25°, 40° & 60° beams.
- E 10° FIELD REDUCER**
Provided with 10° optic, includes honeycomb louver. Reduces field angle by 30%.
- F MEDIA**
Soft Focus Lens standard. Wet location media sealed in place.
- G BAFFLE**
Accepts 2 media devices. Baffle minimizes aperture glare and conceals view into fixture. Powdercoat finishes standard, consult factory for Alumina finishes.

DIMENSIONS / DRAWINGS



WALL MOUNT

- CT2 may be installed in vertical track or wall mounted. Must specify fixture as Wall Mount "WM".



TRACK HEAD STANDARD STEM CT2 ADJUSTABLE

TECHNICAL

CONSTRUCTION

Track Head: Machined aluminum body; painted finishes are granulated powder coat; Alumina finishes are anodized aluminum.

STATIC WHITE LED

2-step MacAdam ellipse LED module available in 80+, 90+ and 97+ CRI configurations in color temperatures of 2700K, 3000K, 3500K and 4000K. 3-step MacAdam ellipse LED module available in 90+ CRI configuration in color temperature of 2400K. Average rated lamp life of 50,000 hours. **WARM DIM LED**

3-step MacAdam ellipse warm dim LED module available in 90+ CRI configuration. 30 or 2700K at full brightness, warming to 1800K at full dim. Average rated lamp life of 50,000 hours. **POWER**

SUPPLY PERFORMANCE AND DIMMING INFORMATION

| | |
|--------------|--------|
| Power Supply | CE3 |
| Minimum °C | -20 °C |
| Maximum °C | 40 °C |
| Dimming % | 2.0% |

MOUNTING

Cylinder track head mounts to recessed, surface or pendant mount track assemblies, specified separately.

LISTING

Listed to UL1574 standard for Dry locations. JA8-2022 Title 24 listed. NEMA 410 compliant.

DECLARE

LBC Red List Approved.

LIMITED WARRANTY

Manufacturer's Limited Warranty guarantees product(s) listed to be free from defects in material and workmanship under normal use and service for 1-year. LED and power supplies are warranted to operate with 70% of original flux and remain within a range of 3 duv for a period of 5-years. Warranty period begins from the date of shipment by Seller. [Consult website for full warranty terms and conditions.](#)

CHANGE LOG

- 05/12/2023: ADDED LBC RED LIST APPROVED.
- 08/08/2023: ADDED NEW LED AND OPTIC SYSTEM.
- 01/10/2024: ADDED 2400K OFFERING.
- 03/18/2024: UPDATED 10 DEGREE NARROW BEAM TO UTILIZE FIELD REDUCER.
- 09/19/2024: UPDATED WITH NEW BAFFLE DESIGN.
- 11/14/2024: ADDED ADDITIONAL POWDERCOAT FINISHES.

