

TRACK HEAD

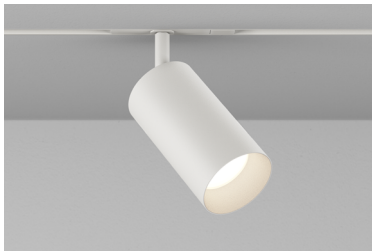
MONOPOINT INSPIRED

CTM1 ADJUSTABLE

Highlight art, objects, places, spaces, seating areas, and architectural details with a classic profile that offers easy-to-adjust, in-field versatility.

PROJECT NAME:

TYPE:



ORDERING INFORMATION - TRACK HEAD

TITLE 24 COMPLIANT

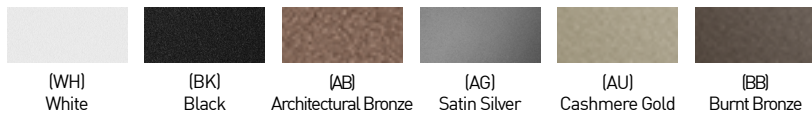
JA8-2022 COMPLIANCE INDICATED BY SHADING

CYLINDER	FIXTURE	STEM LENGTH	RATING	BODY FINISH	BAFFLE FINISH	STEM FINISH	ADAPTER FINISH	CRI / WATTAGE PACKAGE	CCT	OPTIC (UGR)	DRIVER	MEDIA
CTM1			1								CE3	
CTM1 2.60"	<div>A Adjustable 90° Tilt</div> <div>L Locking Track Adaptor, Adjustable 90° Tilt*</div> <div>*(Required for Wall Mount)</div>	<div>LENGTHS</div> <div>SL 1.4" Standard</div> <div>04 4"</div> <div>06 6"</div> <div>08 8"</div> <div>CUSTOM LENGTHS</div> <div>XX Specify in 1" increments between 2"-7" (Ex. 2" = 02)*</div> <div>*(Increased lead time)</div> <div>STEMS ARE NOT FIELD CUTTABLE</div>	1 Dry	<div>POWDERCOAT</div> <div>WH White</div> <div>BK Black</div> <div>AB Architectural Bronze</div> <div>AG Satin Silver</div> <div>AU Cashmere Gold</div> <div>BB Burnt Bronze</div> <div>ALUMINA</div> <div>01 Brushed Obsidian</div> <div>02 Matte Obsidian</div> <div>03 Brushed Dark Patinated Bronze</div> <div>04 Matte Dark Patinated Bronze</div> <div>05 Brushed Aged Aluminum</div> <div>06 Matte Aged Aluminum</div> <div>07 Brushed Cast Brass</div> <div>08 Matte Cast Brass</div> <div>09 Brushed Light Patinated Bronze</div> <div>10 Matte Light Patinated Bronze</div>	<div>POWDERCOAT</div> <div>WH White</div> <div>BK Black</div> <div>AB Architectural Bronze</div> <div>AG Satin Silver</div> <div>AU Cashmere Gold</div> <div>BB Burnt Bronze</div> <div>ALUMINA</div> <div>CONSULT FACTORY FOR ALUMINA FINISHES</div>	<div>POWDERCOAT</div> <div>WH White</div> <div>BK Black</div> <div>AB Architectural Bronze</div> <div>AG Satin Silver</div> <div>AU Cashmere Gold</div> <div>BB Burnt Bronze</div> <div>ALUMINA</div> <div>CONSULT FACTORY FOR ALUMINA FINISHES</div>	<div>W White</div> <div>B Black</div>	<div>STATIC WHITE</div> <div>80S11A 80+ CRI, 11 Watts Lumens Delivered - 1095</div> <div>90S11A 90+ CRI, 11 Watts Lumens Delivered - 941</div> <div>97S11A 97+ CRI, 11 Watts Lumens Delivered - 826</div> <div>WARM DIM</div> <div>90W11A 90+ CRI, 11 Watts</div> <div>Incandescent Profile Lumens Delivered - 654</div> <div>Halogen Profile Lumens Delivered - 658</div> <div>SEE PAGE 2 FOR WARM DIM PROFILE COMPARISON.</div> <div>LUMENS DELIVERED AND T24 COMPLIANCE REFLECT 3000K PAIRED WITH 25° OPTIC AND SOFT FOCUS LENS.</div>	<div>24 2400K* (90+ CRI only)</div> <div>27 2700K</div> <div>30 3000K</div> <div>35 3500K</div> <div>40 4000K</div> <div>WL 2600K - 1800K</div> <div>WD 2900K - 1800K</div>	<div>10 10° (>19)</div> <div>15 15° (<16)</div> <div>20 20° (<10)</div> <div>25 25° (<10)</div> <div>40 40° (<10)</div> <div>60 60° (>19)</div> <div>20 20° (<10)</div> <div>25 25° (<10)</div> <div>40 40° (<10)</div> <div>60 60° (>13)</div>	<div>CE3 Electronic 3% ELV / TRIAC 120V</div>	<div>STANDARD MEDIA</div> <div>4 Soft Focus Lens* (Required for 10° optic)</div> <div>ALTERNATE MEDIA</div> <div>2 Honeycomb Louver* (Not available for Warm Dim)</div> <div>3 Clear Glass Lens* (Not available for Warm Dim)</div> <div>5 Frosted Glass Lens</div> <div>6 Frosted Soft Focus Lens</div> <div>7 Frosted Linear Spread Lens</div> <div>5 Soft Focus Lens w/ Honeycomb Louver</div> <div>F Frosted Glass Lens w/ Honeycomb Louver</div> <div>N No Lens* (Not available for Warm Dim)</div>

ALUMINA FINISHES BY LUCIFER LIGHTING™



POWDERCOAT FINISHES



TRACK HEAD MONOPOINT INSPIRED CTM1 ADJUSTABLE

ACCESSORIES

ALTERNATE MEDIA

- ☐ **HCL-CT1** Honeycomb Louver
- ☐ **CGL-CT1** Clear Glass Lens
- ☐ **SFL-CT1** Soft Focus Lens
- ☐ **FGL-CT1** Frosted Glass Lens
- ☐ **FSFL-CT1** Frosted Soft Focus Lens
- ☐ **FLSL-CT1** Frosted Linear Spread Lens

REPLACEMENT OPTICS

Interchangeable optics accessible by removing baffle.

Static White

- ☐ **RO-50-15-S** 15° optic
- ☐ **RO-50-20-S** 20° optic
- ☐ **RO-50-25-S** 25° optic
- ☐ **RO-50-40-S** 40° optic
- ☐ **RO-50-60-S** 60° optic

Warm Dim

- ☐ **RO-50-20-W** 20° optic
- ☐ **RO-50-25-W** 25° optic
- ☐ **RO-50-40-W** 40° optic
- ☐ **RO-50-60-W** 60° optic

STATIC WHITE PERFORMANCE - 3000K - SOFT FOCUS LENS



JA8-2022 INDICATED BY SHADING

LUMEN PACKAGE	WATTAGE	10° OPTIC		15° OPTIC		20° OPTIC		25° OPTIC		40° OPTIC		60° OPTIC	
		NO SOFT FOCUS LENS		SOFT FOCUS LENS		SOFT FOCUS LENS		SOFT FOCUS LENS		SOFT FOCUS LENS		SOFT FOCUS LENS	
		DELIVERED	LPW	DELIVERED	LPW	DELIVERED	LPW	DELIVERED	LPW	DELIVERED	LPW	DELIVERED	LPW
80S11A	11	454	41	991	90	1093	99	1095	100	1019	93	1145	104
90S11A	11	391	35	851	86	939	95	941	96	875	89	984	100
97S11A	11	337	30	747	68	824	75	826	75	768	70	864	79
90W11AL (2600K-1800K)	11	-	-	-	-	667	60	654	59	605	54	635	58
90W11AD (2900K-1800K)	11	-	-	-	-	661	60	658	59	600	54	640	58

UNIFIED GLARE RATING

10° OPTIC NO LENS	15° OPTIC SOFT FOCUS LENS	20° OPTIC SOFT FOCUS LENS	25° OPTIC SOFT FOCUS LENS	40° OPTIC SOFT FOCUS LENS	60° OPTIC SOFT FOCUS LENS
>19	<16	<10	<10	<10	<16

MEDIA LIGHT LOSS FACTOR

MEDIA	LIGHT LOSS FACTOR
No Lens	1.05
CGL	0.96
SFL	1.00
FGL	0.90
FSFL	0.84
FLSL	0.58
WDL	0.15
HCL	0.71
SFL W/ HCL	0.68
FGL W/ HCL	0.51

OUTPUT MULTIPLIER

CCT	CCT SCALE
2400K	0.85
2700K	0.97
3000K	1.000
3500K	1.03
4000K	1.08

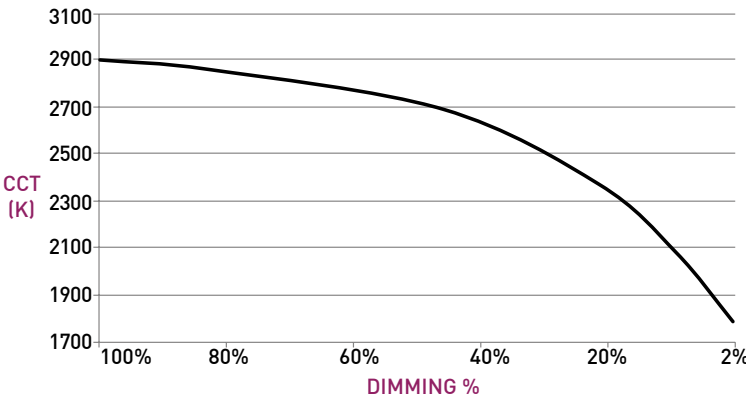
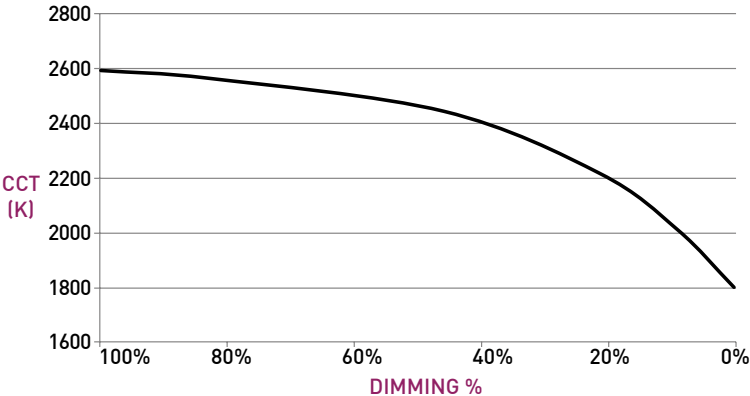
WARM DIM PERFORMANCE - SOFT FOCUS LENS - 25° OPTIC

INCANDESCENT DIMMING PROFILE

90W11AL 2600K - 1800K	Full on 100%	Dimmed to 80%	Dimmed to 70%	Dimmed to 50%	Dimmed to 20%	Dimmed to 10%	Dimmed to 2%
CCT (K)	2600	2550	2520	2450	2200	1925	1800
Light Output (Lm)	654	523	457	327	130	65	13
Power (W)	11	8.8	7.7	5.5	2.2	1.1	.22
Efficacy (LPW)	59	59	59	59	59	59	59

HALOGEN WARM DIM PROFILE

90W11AD 2900K - 1800K	Full on 100%	Dimmed to 80%	Dimmed to 70%	Dimmed to 50%	Dimmed to 20%	Dimmed to 10%	Dimmed to 2%
CCT (K)	2900	2850	2800	2720	2350	1975	1800
Light Output (Lm)	658	526	460	329	131	65	13
Power (W)	11	8.8	7.7	5.5	2.2	1.1	.22
Efficacy (LPW)	59	59	59	59	59	59	59



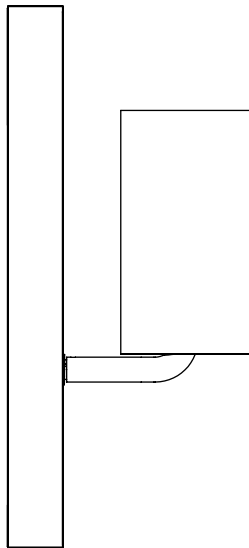
TRACK HEAD MONOPOINT INSPIRED CTM1 ADJUSTABLE

TRACK HEAD

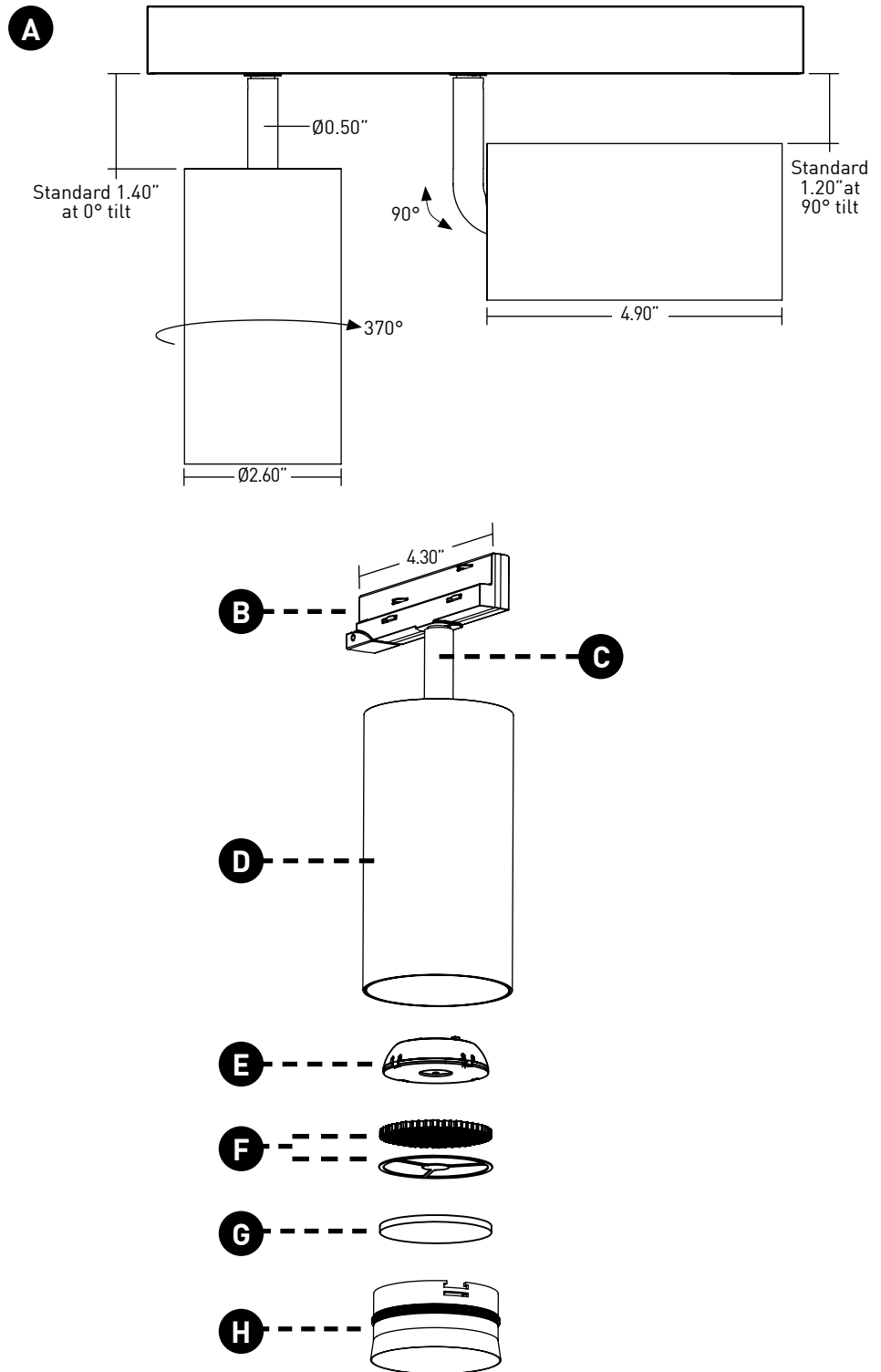
- A ADJUSTABILITY**
Up to 90° lockable tilt and 370° lockable rotation.
- B TRACK ADAPTER**
Proprietary asymmetric track adapter; compatible with Lucifer Lighting track only. Available in Black and White finishes to match track systems.
- C STEM**
Standard length is 1.4", available in even-inch increments from 2" - 8". Stem is not field cuttable. Powdercoat finishes standard, consult factory for Alumina finishes.
- D BODY**
Power supply integrated into fixture body. Available in powdercoat and Alumina finishes.
- E OPTICS**
Robust light engine with optimized optic pairing integrates Reflection, Refraction, and TIR offering 10°, 15°, 20°, 25°, 40° & 60° beams.
- F 10° FIELD REDUCER**
Provided with 10° optic, includes honeycomb louver. Reduces field angle by 30%.
- G MEDIA**
Soft Focus Lens standard. Wet location media sealed in place.
- H BAFFLE**
Accepts 2 media devices. Baffle minimizes aperture glare and conceals view into fixture. Powdercoat finishes standard, consult factory for Alumina finishes.

WALL MOUNT

- CTM1 may be installed in vertical track or wall mounted. Must specify fixture as Wall Mount "L".



DIMENSIONS / DRAWINGS



TRACK HEAD MONOPOINT INSPIRED CTM1 ADJUSTABLE

TECHNICAL

CONSTRUCTION

Track Head: Machined aluminum body; painted finishes are granulated powder coat; Alumina finishes are anodized aluminum.

STATIC WHITE LED

2-step MacAdam ellipse LED module available in 80+, 90+ and 97+ CRI configurations in color temperatures of 2700K, 3000K, 3500K and 4000K. 3-step MacAdam ellipse LED module available in 90+ CRI configuration in color temperature of 2400K. Average rated lamp life of 50,000 hours.

WARM DIM LED

3-step MacAdam ellipse warm dim LED module available in 90+ CRI configuration. 2900K or 2600K at full brightness, warming to 1800K at full dim. Average rated lamp life of 50,000 hours.

POWER SUPPLY PERFORMANCE AND DIMMING INFORMATION

Power Supply	CE3
Minimum °C	-20 °C
Maximum °C	40 °C
Dimming %	3.0%

MOUNTING

Cylinder track head mounts to Lucifer Lighting Company recessed, surface or pendant mount track assemblies, specified separately.

LISTING

Listed to UL1574 standard for Dry locations. JA8-2022 Title 24 listed. NEMA 410 compliant.

DECLARE

LBC Red List Approved.

LIMITED WARRANTY

Manufacturer's Limited Warranty guarantees product(s) listed to be free from defects in material and workmanship under normal use and service for 1-year. LED and power supplies are warranted to operate with 70% of original flux and remain within a range of 3 duv for a period of 5-years. Warranty period begins from the date of shipment by Seller. [Consult website for full warranty terms and conditions.](#)

CHANGE LOG

- 1.03/16/2023: REMOVED ALL STEM LENGTH OFFERINGS EXCEPT STANDARD 1.4" LENGTH.
- 2.05/12/2023: ADDED LBC RED LIST APPROVED.
- 3.08/08/2023: ADDED NEW LED AND OPTIC SYSTEM.
- 4.02/08/2024: ADDED 2400K AND WARM DIM OFFERINGS.
- 5.03/18/2024: UPDATED 10 DEGREE NARROW BEAM TO UTILIZE FIELD REDUCER.
- 6.09/19/2024: UPDATED WITH NEW BAFFLE DESIGN.
- 7.09/30/2024: ADDED ADDITIONAL STEM LENGTHS UP TO 8" MAX.
- 8.11/14/2024: ADDED ADDITIONAL POWDERCOAT FINISHES.

