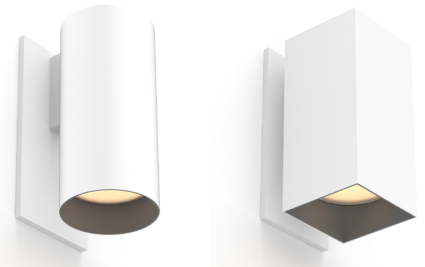


# WALL SCONCE CYLINDER & SQUILINDER®

|               |       |
|---------------|-------|
| PROJECT NAME: | TYPE: |
|---------------|-------|

Exceptional adaptability and performance in classic and modern silhouettes that mount seamlessly and invisibly to the wall.



## ORDERING INFORMATION

**TITLE 24** JA8-2022 INDICATED BY SHADING

| SHAPE                 | TYPE                     | RATING       | BODY FINISH   | BAFFLE FINISH   | CRI / WATTAGE PACKAGE   | CCT  | LOWER OPTIC (UGR)   | UPPER OPTIC (UGR)   | DRIVER   | LOWER MEDIA   | UPPER MEDIA   |
|-----------------------|--------------------------|--------------|---|---|---|--|---|---|--|---|---|
|                       |                          | <b>2</b>     |   |   |   |  |   |   |  |   |   |
| <b>CW2</b> Cylinder   | <b>DF</b> Downlight      | 2 Wet (IP65) | <b>WH</b> White   | <b>WH</b> White   | <b>DOWNLIGHT (DF)</b><br><b>STATIC WHITE</b><br><b>80S11A</b> 80+ CRI, 11W, Lm. Delivered - 1232<br><b>80S17A</b> 80+ CRI, 17W, Lm. Delivered - 1893<br><b>80S23A</b> 80+ CRI, 23W, Lm. Delivered - 2470<br><b>90S11A</b> 90+ CRI, 11W, Lm. Delivered - 1028<br><b>90S17A</b> 90+ CRI, 17W, Lm. Delivered - 1626<br><b>90S23A</b> 90+ CRI, 23W, Lm. Delivered - 2122<br><b>97S11A</b> 97+ CRI, 11W, Lm. Delivered - 929<br><b>97S17A</b> 97+ CRI, 17W, Lm. Delivered - 1428<br><b>97S23A</b> 97+ CRI, 23W, Lm. Delivered - 1863 |  |   |   | <b>DOWNLIGHT (DF)</b><br><b>INTEGRAL</b><br><b>RP1</b> 120V, 1% Forward/Reverse or 120-277V, 1% 0-10V Analog Logarithmic<br><b>REMOTE (120V)</b><br><b>TR2</b> Philips, 2% Forward/Reverse<br><b>UP / DOWNLIGHT (UD)</b><br><b>INTEGRAL</b><br><b>CA3</b> 120-277V, 2% 0-10V Analog Logarithmic<br><b>CE3</b> 120V, 2% Forward/Reverse<br><b>DOWNLIGHT (DF) &amp; UP / DOWNLIGHT (UD)</b><br><b>REMOTE (120V)</b><br><b>L23</b> Lutron, Hi-Lume 1% 2-Wire<br><b>REMOTE (120-277V)</b><br><b>LH1</b> Lutron, Hi-Lume 1% Ecosystem<br><b>AN4</b> Philips Titanium 1% 0-10V, LOG<br><b>EA2</b> eldoLED, SOLOdrive 0.1% 0-10V, LOG<br><b>ED1</b> eldoLED, SOLOdrive 0.1% DALI, LOG<br><b>AS1/ASR</b> Athena Control eldoLED, SOLOdrive 0.1% 120-277V*<br><small>*Includes Athena Node. Extended lead time, consult factory. ASR includes shunt</small><br><b>CS1/CSR</b> Casambi Control eldoLED, SOLOdrive 0.1% 120-277V*<br><small>*Includes Casambi Node. Extended lead time, consult factory. CSR includes shunt</small> | <b>3</b> Clear Glass Lens*<br><small>*Not available for Warm Dim</small><br><b>4</b> Soft Focus Lens<br><b>5</b> Frosted Glass Lens<br><b>6</b> Frosted Soft Focus Lens<br><b>7</b> Frosted Linear Spread Lens*<br><small>*Not available for Squilinder</small> | <b>9</b> Diffusion Lens*<br><small>*Required with UD fixture</small><br><b>LEAVE BLANK FOR DOWNLIGHT (DF)</b> |
| <b>SW2</b> Squilinder | <b>UD</b> Up / Downlight |              | <b>AG</b> Satin Silver<br><b>AU</b> Cashmere Gold<br><b>BB</b> Burnt Bronze<br><b>AB</b> Architectural Bronze<br><b>BK</b> Black<br><b>CF</b> Custom Finish*<br><small>*Consult Factory</small> | <b>AG</b> Satin Silver<br><b>AU</b> Cashmere Gold<br><b>BB</b> Burnt Bronze<br><b>AB</b> Architectural Bronze<br><b>BK</b> Black<br><b>CF</b> Custom Finish*<br><small>*Consult Factory</small> |   | <b>24</b> 2400K*<br><small>*190+CRI only</small><br><b>27</b> 2700K<br><b>30</b> 3000K<br><b>35</b> 3500K<br><b>40</b> 4000K | <b>15</b> 15° (<13)<br><b>20</b> 20° (<10)<br><b>25</b> 25° (<10)<br><b>40</b> 40° (<10)<br><b>60</b> 60° (<16) | <b>00</b> DF Only*<br><small>*Required with DF fixture</small>  |  |   |   |
|                       |                          |              |   |   | <b>DOWNLIGHT (DF)</b><br><b>WARM DIM</b><br><b>90W18A</b> 90+ CRI, 18W<br>Incandescent Profile 2700K - 1800K Lm. Delivered - 1099<br>Halogen Profile 3000K - 1800K Lm. Delivered - 1113<br><small>*SEE PAGE 3 FOR DETAILED WARM DIM PROFILE COMPARISON.</small>   | <b>WL</b> 2700K - 1800K<br><b>WD</b> 3000K - 1800K   |   |   |  |   |   |
|                       |                          |              |   |   | <b>UP / DOWNLIGHT (UD)</b><br><b>STATIC WHITE</b><br><b>80S11A</b> 80+ CRI, 11W, Lm. Delivered - 1271<br><b>90S11A</b> 90+ CRI, 11W, Lm. Delivered - 1092<br><b>97S11A</b> 97+ CRI, 11W, Lm. Delivered - 959<br><br><small>*ALL DELIVERED LUMEN OUTPUTS AND T24 COMPLIANCE REFLECT 3000K PAIRED WITH 20° OPTIC AND SOFT FOCUS LENS.</small>   | <b>24</b> 2400K*<br><small>*190+CRI only</small><br><b>27</b> 2700K<br><b>30</b> 3000K<br><b>35</b> 3500K<br><b>40</b> 4000K | <b>15</b> 15° (<13)<br><b>20</b> 20° (<10)<br><b>25</b> 25° (<10)<br><b>40</b> 40° (<10)<br><b>60</b> 60° (<16) | <b>15</b> 15° (<16)<br><b>20</b> 20° (<13)<br><b>25</b> 25° (<13)<br><b>40</b> 40° (<13)<br><b>60</b> 60° (<13) |  |   |   |
|                       |                          |              |   |   |   | SEE PAGE 3 FOR UGR RATINGS   | SEE PAGE 3 FOR UGR RATINGS  |   |  |   |   |



### PART NUMBER NOTES

- Wall Sconce (ex.) CW2-DF2-WHBK-90S23A2-30-RP1-40
- Up / Downlight (UD) fixtures require two remote drivers
- Remote driver(s) ships as (ex.) PS-RMT-80S11A-1L23

# WALL SCONCE

## ACCESSORIES

### CYLINDER ALTERNATE BAFFLE AND MEDIA

Includes baffle with sealed lens.  
Must specify baffle finish.

**RBA-CY2-\*\*-CGL** Clear Glass Lens\*

\*(Not available for Warm Dim)

**RBA-CY2-\*\*-SFL** Soft Focus Lens

**RBA-CY2-\*\*-FGL** Frosted Glass Lens

**RBA-CY2-\*\*-FSFL** Frosted Soft Focus Lens

**RBA-CY2-\*\*-FSL** Frosted Linear Spread Lens

\*\* Baffle finish: Specify **WH** for white, **BK** for black, **AG** for satin silver, **AB** for architectural bronze, **AU** for cashmere gold, or **BB** for burnt bronze.

### SQUILINDER ALTERNATE BAFFLE AND MEDIA

Includes baffle with sealed lens.  
Must specify baffle finish.

**RBA-SQ2-\*\*-CGL-2** Clear Glass Lens\*

\*(Not available for Warm Dim)

**RBA-SQ2-\*\*-SFL-2** Soft Focus Lens

**RBA-SQ2-\*\*-FGL-2** Frosted Glass Lens

**RBA-SQ2-\*\*-FSFL-2** Frosted Soft Focus Lens

\*\* Baffle finish: Specify **WH** for white, **BK** for black, **AG** for satin silver, **AB** for architectural bronze, **AU** for cashmere gold, or **BB** for burnt bronze.

### LOWER REPLACEMENT OPTIC

#### Static White

**RO-70-15-S** 15° optic

**RO-70-20-S** 20° optic

**RO-70-25-S** 25° optic

**RO-70-40-S** 40° optic

**RO-70-60-S** 60° optic

#### Warm Dim

**RO-70-20-W** 20° optic

**RO-70-25-W** 25° optic

**RO-70-40-W** 40° optic

**RO-70-60-W** 60° optic

### UPPER REPLACEMENT OPTIC

#### Static White

**RO-50-15-S** 15° optic

**RO-50-20-S** 20° optic

**RO-50-25-S** 25° optic

**RO-50-40-S** 40° optic

**RO-50-60-S** 60° optic

### REPLACEMENT SUCTION TOOL

Included with each order (1 per 10 fixtures).

**CY-SQ-TOOL-SUCTION** Baffle assembly removal tool

### EMERGENCY LIGHTING - REMOTE MOUNT ONLY

During disruption of main power, emergency battery inverter provides temporary 120V or 277V to fixture.

**EMB-S-25-120/277-LEDX** 25 watt max capacity, 120 or 277 VAC 60Hz, Non-dimmable

**EMB-S-100-120-LEDX** 100 watt max capacity, 120 VAC 60Hz, 0-10V Dimmable

**EMB-S-100-277-LEDX** 100 watt max capacity, 277 VAC 60Hz, 0-10V Dimmable

**EMB-S-250-120/277-LEDX** 250 watt max capacity, 120 or 277 VAC 60Hz, 0-10V Dimmable

# WALL SCNCE

## STATIC WHITE PERFORMANCE - 3000K - SOFT FOCUS LENS

| LUMEN PACKAGE       | WATTAGE | 15° OPTIC |     | 20° OPTIC |     | 25° OPTIC |     | 40° OPTIC |     | 60° OPTIC |     |
|---------------------|---------|-----------|-----|-----------|-----|-----------|-----|-----------|-----|-----------|-----|
|                     |         | DELIVERED | LPW | DELIVERED | LPW | DELIVERED | LPW | DELIVERED | LPW | DELIVERED | LPW |
| <b>DOWNLIGHT</b>    |         |           |     |           |     |           |     |           |     |           |     |
| 80S11A              | 11      | 1170      | 106 | 1232      | 112 | 1242      | 113 | 1194      | 109 | 113       | 103 |
| 80S17A              | 17      | 1790      | 105 | 1893      | 111 | 1895      | 111 | 1814      | 107 | 1722      | 101 |
| 80S23A              | 23      | 2351      | 102 | 2470      | 107 | 2463      | 107 | 2366      | 103 | 2230      | 97  |
| 90S11A              | 11      | 1005      | 91  | 1058      | 96  | 1067      | 97  | 1026      | 93  | 973       | 88  |
| 90S17A              | 17      | 1538      | 90  | 1626      | 96  | 1628      | 96  | 1558      | 92  | 1479      | 87  |
| 90S23A              | 23      | 2020      | 88  | 2122      | 92  | 2116      | 92  | 2033      | 88  | 1916      | 83  |
| 97S11A              | 11      | 882       | 80  | 929       | 84  | 937       | 85  | 901       | 82  | 854       | 78  |
| 97S17A              | 17      | 1350      | 79  | 1428      | 84  | 1429      | 84  | 1368      | 80  | 1299      | 76  |
| 97S23A              | 23      | 1774      | 77  | 1863      | 81  | 1858      | 81  | 1785      | 78  | 1682      | 73  |
| 90W18A (WL 27K-18K) | 18      | -         | -   | 1099      | 61  | 1104      | 61  | 1074      | 60  | 1021      | 57  |
| 90W18A (WL 30K-18K) | 18      | -         | -   | 1113      | 62  | 1107      | 62  | 1077      | 60  | 1028      | 57  |
| <b>UPLIGHT</b>      |         |           |     |           |     |           |     |           |     |           |     |
| 80S11A*             | 11      | 1187      | 108 | 1271      | 116 | 1262      | 115 | 1193      | 108 | 1296      | 118 |
| 90S11A*             | 11      | 1020      | 93  | 1092      | 99  | 1084      | 99  | 1025      | 93  | 113       | 101 |
| 97S11A*             | 11      | 896       | 81  | 959       | 87  | 952       | 87  | 900       | 82  | 977       | 89  |

**\*NOTE:** To determine total performance for up / downlight (UD) fixture, add Lm. Delivered of Up and Down configurations and divide by total system wattage (22W = 11W Up + 11W Down).

### UNIFIED GLARE RATING DOWNLIGHT

| 10° OPTIC NO LENS | 15° OPTIC SOFT FOCUS LENS | 20° OPTIC SOFT FOCUS LENS | 25° OPTIC SOFT FOCUS LENS | 40° OPTIC SOFT FOCUS LENS | 60° OPTIC SOFT FOCUS LENS |
|-------------------|---------------------------|---------------------------|---------------------------|---------------------------|---------------------------|
| >19               | <13                       | <10                       | <10                       | <10                       | <16                       |

### UNIFIED GLARE RATING UPLIGHT

| 15° OPTIC SOFT FOCUS LENS | 20° OPTIC SOFT FOCUS LENS | 25° OPTIC SOFT FOCUS LENS | 40° OPTIC SOFT FOCUS LENS | 60° OPTIC SOFT FOCUS LENS |
|---------------------------|---------------------------|---------------------------|---------------------------|---------------------------|
| <16                       | <13                       | <13                       | <13                       | <13                       |

### OUTPUT MULTIPLIER

| CCT   | CCT SCALE |
|-------|-----------|
| 2400K | 0.76      |
| 2700K | 0.97      |
| 3000K | 1.00      |
| 3500K | 1.03      |
| 4000K | 1.08      |

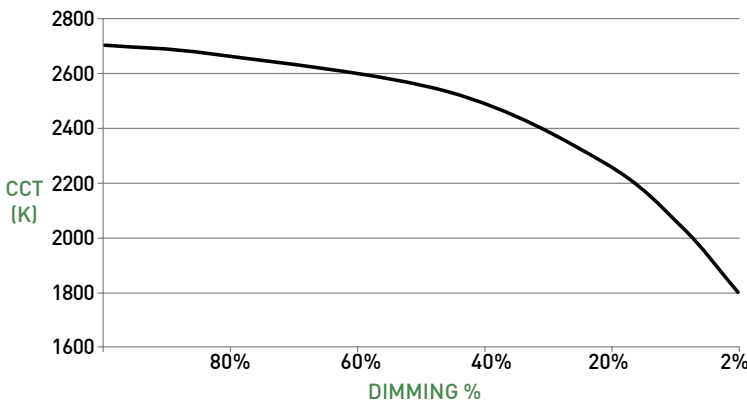
### MEDIA LIGHT LOSS MULTIPLIER

| MEDIA   | LIGHT LOSS FACTOR |
|---------|-------------------|
| No Lens | 1.05              |
| CGL     | 1.00              |
| SFL     | 1.00              |
| FGL     | 0.89              |
| FSFL    | 0.87              |
| FLSL    | 0.82              |

## WARM DIM PERFORMANCE - SOFT FOCUS LENS - 20° OPTIC

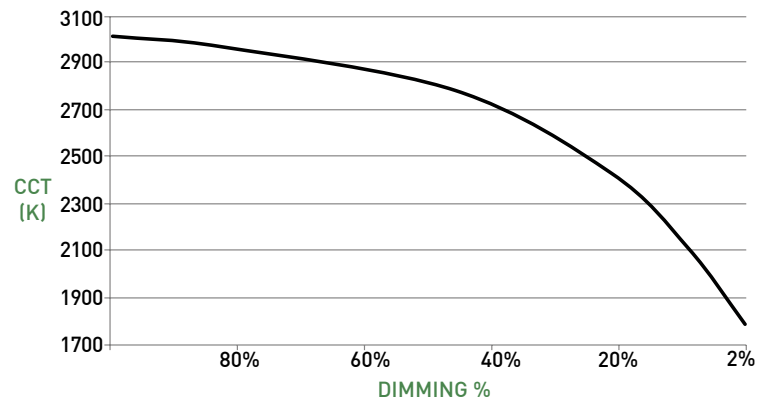
### INCANDESCENT PROFILE

| 90W11A 2700K - 1800K | Full on 100% | Dimmed to 80% | Dimmed to 70% | Dimmed to 50% | Dimmed to 20% | Dimmed to 10% | Dimmed to 2% |
|----------------------|--------------|---------------|---------------|---------------|---------------|---------------|--------------|
| CCT (K)              | 2700         | 2650          | 2620          | 2520          | 2180          | 1950          | 1800         |
| Light Output (Lm)    | 1099         | 879           | 769           | 549           | 219           | 109           | 22           |
| Power (W)            | 18           | 14            | 13            | 9             | 4             | 2             | 0.3          |
| Efficacy (LPW)       | 61           | 61            | 61            | 61            | 61            | 61            | 61           |



### HALOGEN PROFILE

| 90W12A 3000K - 1800K | Full on 100% | Dimmed to 80% | Dimmed to 70% | Dimmed to 50% | Dimmed to 20% | Dimmed to 10% | Dimmed to 2% |
|----------------------|--------------|---------------|---------------|---------------|---------------|---------------|--------------|
| CCT (K)              | 3000         | 2950          | 2920          | 2775          | 2375          | 2000          | 1800         |
| Light Output (Lm)    | 1113         | 890           | 779           | 556           | 222           | 111           | 22           |
| Power (W)            | 18           | 14            | 13            | 9             | 4             | 2             | 0.3          |
| Efficacy (LPW)       | 62           | 62            | 62            | 62            | 62            | 62            | 62           |



# WALL SCONCE

## CYLINDER

- A LUMINAIRE**  
Machined aluminum body with integrated heat sink and LED; power supply may be integral or remote mount.
- B LOWER OPTIC**  
Robust light engine with optimized optic pairing integrates Reflection, refraction, TIR offering 15°, 20°, 25°, 40° & 60° beams.
- C LOWER MEDIA**  
Cylinder baffle lens assembly can accept 1 lens sealed in place. Soft focus lens included as standard for lens. Suction tool provided for removal of baffle lens assembly.
- D UPPER MEDIA**  
Cylinder assembly can accept 1 lens sealed in place. Diffusion lens included as standard for lens.
- E UPPER OPTIC**  
Robust light engine with optimized optic pairing integrates Reflection, refraction, TIR offering 15°, 20°, 25°, 40° & 60° beams.

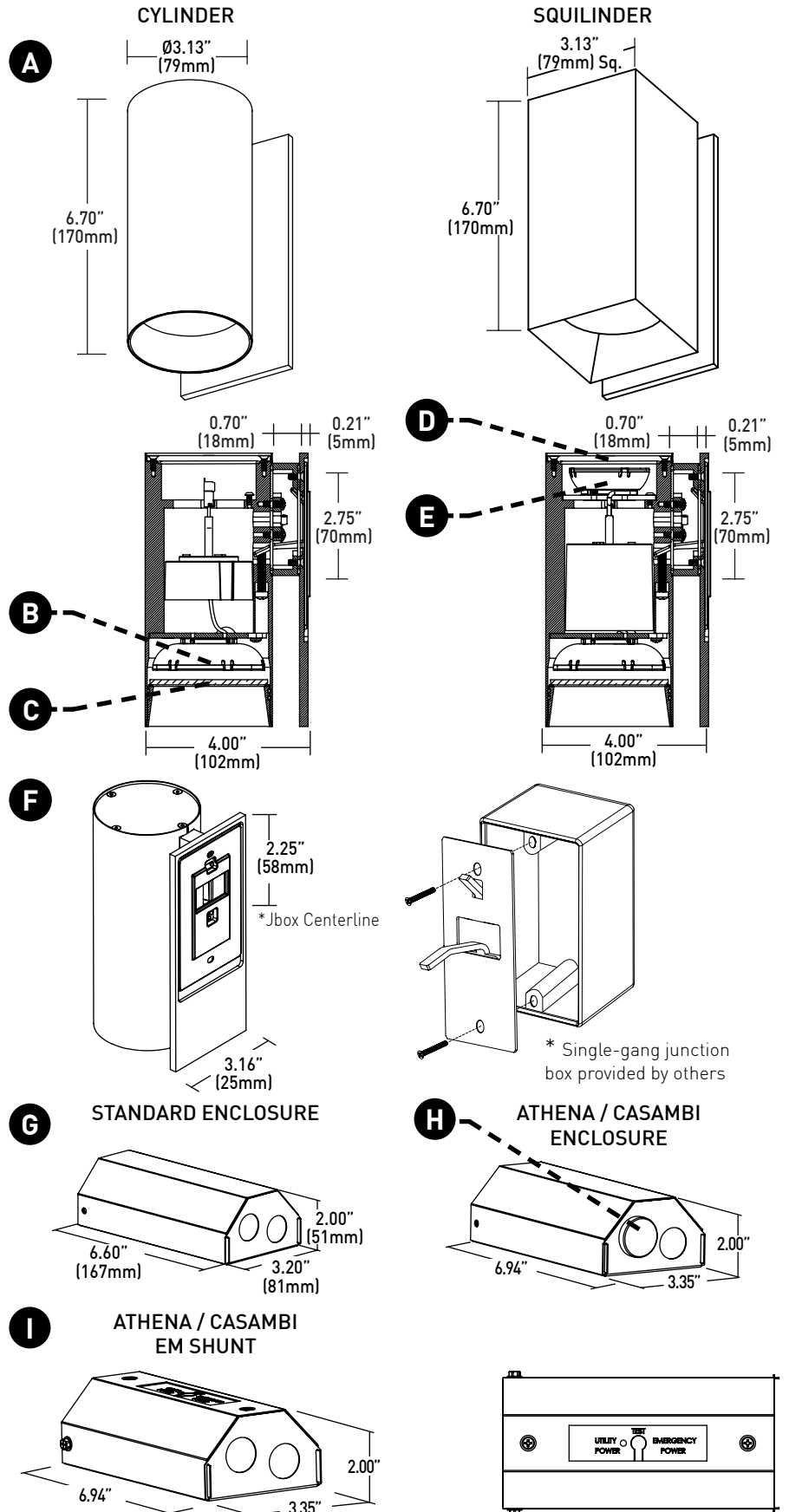
## MOUNTING

- F MOUNTING PLATE**  
Mounting plate (concealed) with factory supplied hidden screws after wall is fully finished. Single-gang junction box required for mounting. Fixture to mount flush with minimalist transition to wall.

## REMOTE POWER SUPPLY

- G PS-RMT**  
Remote power supply provides additional driver options. Consult installation guide for maximum allowable secondary run lengths between PS-RMT and fixture. Must be installed in an accessible location.
- H ATHENA / CASAMBI CONTROL**  
Controls integrated into housing or remote driver assembly. All equipment is serviceable.  
  
Athena Model Numbers: A-WN-D01-RF-BL & DFC-OEM-DBI  
  
Casambi Model Number: BT-S1E1-5400
- I ATHENA / CASAMBI EM SHUNT**  
Included with drivers specified as ASR, ADR, CSR, or CDR. One required for each wireless EM fixture, requires class 2 control wiring between fixture and shunt. Features integrated test switch.  
  
Model Number: PS-RMT-SHUNT

## DIMENSIONS / DRAWINGS



# WALL SCONCE

## TECHNICAL

### CONSTRUCTION

**Cylinder / Squilinder:** Machined aluminum body; extruded aluminum internal heat-sink; painted finishes are granulated powder coat.

**Remote Power Supply:** 22 Gauge galvanized steel.

### STATIC WHITE LED

2-step MacAdam ellipse LED module available in 80+, 90+ and 97+ CRI configurations in color temperatures of 2700K, 3000K, 3500K and 4000K. 3-step MacAdam ellipse LED module available in 90+ CRI configuration in color temperature of 2400K, Average rated lamp life: 50,000 hours. LED and driver assemblies are field-replaceable.

### WARM DIM LED

3-step MacAdam ellipse warm dim LED module available in 90+ CRI configuration. 3000K or 2700K at full brightness, warming to 1800K at full dim. Average rated lamp life of 50,000 hours. LED and driver assemblies are field-replaceable.

### POWER SUPPLY PERFORMANCE AND DIMMING INFORMATION

| Power Supply | PHASE  |        |        | 0-10V |        |        |        | ECO   | DALI   | ATHENA | CASAMBI |
|--------------|--------|--------|--------|-------|--------|--------|--------|-------|--------|--------|---------|
|              | CE3    | RP1    | TR2    | L23   | CA3    | AN4    | EA2    | LH1   | ED1    | AS1    | CS1     |
| Minimum °C   | -20 °C | -10 °C | -20 °C | 0 °C  | -20 °C | -20 °C | -20 °C | 0 °C  | -20 °C | 0 °C   | -20 °C  |
| Maximum °C   | 40 °C  | 40 °C  | 40 °C  | 40 °C | 40 °C  | 40 °C  | 40 °C  | 40 °C | 40 °C  | 40 °C  | 40 °C   |
| Dimming %    | 2.0%   | 1.0%   | 2.0%   | 1.0%  | 2.0%   | 1.0%   | 0.1%   | 1.0%  | 0.1%   | 0.1%   | 0.1%    |

Note: For TR2, L23, LH1, AN4 and EA2 drivers consult chart on page 6 to confirm appropriate dimming curve for compatibility with selected control.

### MAXIMUM ALLOWABLE REMOTE DRIVER WIRING DISTANCES

| DRIVER             | WIRE AWG |      |      |     |     |
|--------------------|----------|------|------|-----|-----|
|                    | 12       | 14   | 16   | 18  | 20  |
| TR2, AN4           | 285'     | 180' | 113' | 71' | 45' |
| L23, LH1           | 60'      | 40'  | 25'  | 15' | -   |
| EA2, ED1, AS1, CS1 | -        | -    | 118' | 72' | 46' |

### MOUNTING

Cylinder is supplied with a mounting adaptor plate providing a minimalist transition accommodating wall thicknesses of 0.44" (7/16", 12mm) to 0.75" (3/4", 19mm).

### OPERATING TEMPERATURE

Down Light: 104°F (40°C).

### LISTING

cTUVus listed to UL1598 standard for Dry / Damp and Wet (IP65) locations.  
Title 24 JA8-2022 Listed.  
NEMA 410 Compliant.

### FIXTURE

Fixture - 2 lbs  
Remote Driver - 1.4 lbs

### LIMITED WARRANTY

Manufacturer's 1-year warranty guarantees product(s) listed to be free from defects in material and workmanship under normal use and service. 5-year warranty on LED and power supply to operate with 70% of the original flux and remain within a range of 3 duv. 10-year Lutron Advantage limited warranty available on Lutron equipped systems. Warranty period begins from the date of shipment by Seller. [Consult website for full warranty terms and conditions.](#)

### CHANGE LOG

- 01/12/2021: ADDED 2200K, 2700K-1800K WARM DIM OFFERINGS.
- 10/17/2022: REMOVED 90W13A 3200K-1800K WARM DIM AND ADDED 90W12A 3000K-1800K WARM DIM.
- 08/01/2023: UPDATED ALL LED AND OPTIC OFFERINGS. REMOVED 2200K OFFERING
- 01/11/2024: ADDED ATHENA AND CASAMBI CONTROL OFFERING. ADDED 2400K OFFERING.

# WALL SCNCE

## DIMMING COMPATIBILITY

### PHILIPS DRIVER COMPATIBILITY

| Power supply TR2   | Family/Model #        |
|--------------------|-----------------------|
| Lutron Electronics | DV-600P               |
| Lutron Electronics | DVELV-303P            |
| Lutron Electronics | NTELV-600             |
| Lutron Electronics | MAELV-600             |
| Lutron Electronics | SELV-300P             |
| Lutron Electronics | DVLV-600P             |
| Lutron Electronics | NFTU-5A               |
| Lutron Electronics | CTCL-153P             |
| Lutron Electronics | GL-600H               |
| Lutron Electronics | S-600P                |
| Lutron Electronics | PHPM                  |
| Power supply AN4   | Family/Model #        |
| Lutron Electronics | DVTV plus PP-DV       |
| Lutron Electronics | DVSCTV plus PP-DV     |
| Lutron Electronics | DVSTV                 |
| Lutron Electronics | DVSCSTV               |
| Lutron Electronics | QSGRJ-XP plus GRX-TVI |
| Lutron Electronics | QSGRJ-XE plus GRX-TVI |
| Lutron Electronics | QSGR-XE plus GRX-TVI  |
| Lutron Electronics | NFTV plus PP-DV       |
| Lutron Electronics | NTSTV                 |
| Lutron Electronics | RMJ-5T                |
| Lutron Electronics | RMJS-8T               |
| Lutron Electronics | FCJS-010              |
| Leviton            | IllumaTch IP7 series  |
| Philips            | Sunrise - SR1200ZTUNV |

### LUTRON DRIVER COMPATIBILITY

| Power supply L23  | Part No.                      |
|---|-------------------------------|
| Maestro WirelessR 600 W dimmer                                | MRF2-6ND-120-                 |
| Maestro WirelessR 1000 W dimmer                               | MRF2-10ND-120-                |
| Caséta® Wireless Pro 1000 W dimmer                            | PD-10NXD-                     |
| GRAFIK T™ CL® dimmer  | GT-250M-GTJ-250M-             |
| HomeWorks® QS adaptive dimmer                                 | HQRD-6NA-                     |
| HomeWorks® QS 600 W dimmer                                    | HQRD-6ND-                     |
| HomeWorks® QS 1000 W dimmer                                   | HQRD-10ND-                    |
| RadioRA® 2 adaptive dimmer                                    | RRD-6NA-                      |
| RadioRA® 2 1000 W dimmer                                      | RRD-10ND                      |
| myRoom™ DIN power module                                      | MQSE-4A1-D                    |
| HomeWorks® QS DIN power module                                | LQSE-4A1-D                    |
| HomeWorks® QS wallbox power module                            | HQRJ-WPM-6D-120               |
| HomeWorks® wallbox power module                               | HWI-WPM-6D-120                |
| GRAFIK Eye® QS control unit                                   | QSGR-, QSGRJ-                 |
| GRAFIK Eye® 3000 control unit                                 | GRX-3100-GRX-3500-            |
| RPM-4U module (LCP, HomeWorks® QS, GRAFIK Systems™, Quantum®) | HW-RPM-4U-120 LP-RPM-4U-120   |
| RPM-4A module (LCP, HomeWorks® QS, GRAFIK Systems™, Quantum®) | HW-RPM-4A-120, LP-RPM-4A-120  |
| GP dimming panels   | Various                       |
| Ariadni CL 250W dimmer  | AYCL-253P-                    |
| Diva CL 250W dimmer   | DVCL-253P-DCSCCL-253P-        |
| Nova T CL 250W dimmer   | NTCL-250-                     |
| Power supply LH1  | Part No.                      |
| PowPak Dimming Modules  | RMJ-ECO32-DV-B                |
| PowPak Dimming Modules  | FCJ/FCJS-ECO                  |
| Energi Savr Nodes   | QSN-1ECO-S                    |
| GRAFIK Eye QS control unit                                    | QSN-2ECO-S                    |
| Homeworks QS control unit                                     | QSGRJ- _E (wireless) QSGR- _E |
| Quantum Hub   | QP2-__ 2C                     |
| Quantum Hub   | QP2-__ 4C                     |
| Quantum Hub   | QP2-__ 6C                     |
| Quantum Hub   | QP2-__ 8C                     |
| Homeworks QS power module                                     | LQSE-2ECO-D                   |
| myRoom Plus power module                                      |                               |



### eldoLED DRIVER COMPATIBILITY

| Power supply EA2          | Family/Model #                 |
|---------------------------|--------------------------------|
| Busch-Jaeger              | 2112U-101                      |
| Jung                      | 240-10                         |
| Leviton Lighting Controls | IP710-DLX                      |
| Lightolier Controls       | ZP600FAM120                    |
| Lutron Electronics        | Nova T® - NTFTV                |
| Lutron Electronics        | Diva® - DVTV                   |
| Lutron Electronics        | Nova® - NFTV                   |
| Merten                    | 5729                           |
| Pass & Seymour            | CD4FB-W                        |
| The Watt Stopper          | DCLV1                          |
| Sensor Switch             | nI0 EZ                         |
| Synergy                   | ISD BC                         |
| Lutron Electronics        | GrafixEye® GRX-TVI w GRX3503   |
| Lutron Electronics        | Energi Savr Node™ - QSN-4T16-S |
| Lutron Electronics        | TVM2 Module                    |
| Crestron®                 | GLX-DIMFLV8                    |
| Crestron®                 | GLXP-DIMFLV8                   |
| Crestron®                 | GLPAC-DIMFLV4-*                |
| Crestron®                 | GLPAC-DIMFLV8-*                |
| Crestron®                 | GLPP-DIMFLVEX-PM               |
| Crestron®                 | GLPP-1DIMFLV2EX-PM             |
| Crestron®                 | GLPP-1DIMFLV3EX-PM             |
| Crestron®                 | DIN-A08                        |
| Crestron®                 | DIN-4DIMFLV4                   |
| Crestron®                 | CLS-EXP-DIMFLV                 |
| Crestron®                 | CLCI-1DIMFLV2EX                |
| ABB                       | SD/S 2.16.1                    |

## ANALOG DRIVERS AND DIMMERS

